

Owen County 4-H

NEWS

4-H YOUTH DEVELOPMENT



SUMMER UPDATES



David Gabbard

David Gabbard

Owen County

Cooperative Extension 4-H

I hope everyone is having a fun and safe summer! Owen County 4-H has been SUPER busy with all kinds of fun activities like Teen Conference, 4-H Summer Camp, and County Fair! I just wanted to say THANK YOU, to all the volunteers, sponsors, donors, parents, and community members that made all these things possible!

Check out this newsletter for upcoming summer events with dates and times!!

As always, if you have any questions or concerns, please feel free to contact me at 502-484-5703 or via email at David.gabbard@uky.edu

Snippy Jim
Jim Gray 510.034.0494
jimgray@comcast.net

SCISSOR SHARPENING

We are pleased to announce Snippy Jim will be coming the following days/times to provide his scissor sharpening services.

\$5 per implement

Owen County Extension Office
Tuesday, September 5, 2023
11AM-3PM

Call to Register at (502) 484-5703

In addition to scissors, he sharpens snips, pinking shears, knives, garden tools, axes, loopers, and manual hedge trimmers.

You are welcome to bring any item that needs to be sharpened. Snippy has been at quilting events throughout Kentucky, Indiana and Ohio.


He does NOT grind your implements; he SHARPENS them.

Cooperative Extension Service
Agriculture and Natural Resources
Family and Consumer Sciences
4-H Youth Development
Community and Economic Development


MARTIN-GATTON COLLEGE OF AGRICULTURE, FOOD AND ENVIRONMENT
Educational programs of Kentucky Cooperative Extension serve all people regardless of economic or social status and will not discriminate on the basis of race, color, ethnic origin, national origin, creed, religion, political belief, sex, sexual orientation, gender identity, gender expression, pregnancy, marital status, genetic information, age, veteran status, physical or mental disability or reprisal or retaliation for prior civil rights activity. Reasonable accommodation of disability may be available with prior notice. Program information may be made available in languages other than English.
University of Kentucky, Kentucky State University, U.S. Department of Agriculture, and Kentucky Counties, Cooperating.
Lexington, KY 40506




HEAD



HEART



HANDS



HEALTH

**Cooperative
Extension Service**

Agriculture and Natural Resources
Family and Consumer Sciences
4-H Youth Development
Community and Economic Development

MARTIN-GATTON COLLEGE OF AGRICULTURE, FOOD AND ENVIRONMENT

Educational programs of Kentucky Cooperative Extension serve all people regardless of economic or social status and will not discriminate on the basis of race, color, ethnic origin, national origin, creed, religion, political belief, sex, sexual orientation, gender identity, gender expression, pregnancy, marital status, genetic information, age, veteran status, physical or mental disability or reprisal or retaliation for prior civil rights activity. Reasonable accommodation of disability may be available with prior notice. Program information may be made available in languages other than English.
University of Kentucky, Kentucky State University, U.S. Department of Agriculture, and Kentucky Counties, Cooperating.
Lexington, KY 40506



Disabilities
accommodated
with prior notification.



University of Kentucky
College of Agriculture,
Food and Environment
Cooperative Extension Service



4-H Youth Development

Owen County 4-H Drone Day Camp

Join us July 24th from 10am-2pm to learn about and fly drones, and some new oppourtunities for 4-H members! Lunch will be provided. CALL 502.484.5703 TO REGISTER! Bring a Smartphone or device that you can download apps on!



Cooperative Extension Service
Agriculture and Natural Resources
Family and Consumer Sciences
4-H Youth Development
Community and Economic Development

Educational programs of Kentucky Cooperative Extension serve all people regardless of economic or social status and will not discriminate on the basis of race, color, ethnic origin, national origin, creed, religion, political belief, sex, sexual orientation, gender identity, gender expression, pregnancy, marital status, genetic information, age, veteran status, or physical or mental disability. University of Kentucky, Kentucky State University, U.S. Department of Agriculture, and Kentucky Counties, Cooperating.

LEXINGTON, KY 40546




Disabilities
accommodated
with prior notification.



**Owen County
Cooperative
Extension**
502.484.5703



University of Kentucky
College of Agriculture,
Food and Environment
Cooperative Extension Service
 4-H Youth Development

**PLEASE CALL
TO SIGN UP**

4-H SHOOTING SPORTS

MEETING DATES

**June 12th
June 19th**

**July 10th
July 17th**

**August 7th
August 14th
August 28th**

**ALL
MEETINGS
6-8 PM**

**Elk Creek Hunt
Club & Resort**
1860 Georgetown Road
Owenton, KY 40359

Cooperative Extension Service
Agriculture and Natural Resources
Family and Consumer Sciences
4-H Youth Development
Community and Economic Development

Educational programs of Kentucky Cooperative Extension serve all people regardless of economic or social status and will not discriminate on the basis of race, color, ethnic origin, national origin, creed, religion, political belief, sex, sexual orientation, gender identity, gender expression, pregnancy, marital status, genetic information, age, veteran status, or physical or mental disability. University of Kentucky, Kentucky State University, U.S. Department of Agriculture, and Kentucky Counties, Cooperating.





4-H State Fair Entries

All State Fair entries must be dropped off to the Owen County Cooperative Extension Office by August 11th 4:00 PM!! Crops, Garden, and Foods Exhibits are to be dropped off on Sunday, August 13th 5-7 PM.

****All 4-H entries will receive 2 FREE tickets**** Additional tickets can be purchased! Call 502.484.5703 for more details!!



Country Ham Cleaning

TUESDAY, AUGUST 15TH

3 PM

OWEN COUNTY EXTENSION OFFICE

4-H COUNTRY HAM STATE FAIR ENTRIES ONLY



Cooperative Extension Service
Agriculture and Natural Resources
Family and Consumer Sciences
4-H Youth Development
Community and Economic Development

Educational programs of Kentucky Cooperative Extension serve all people regardless of economic or social status and will not discriminate on the basis of race, color, ethnic origin, national origin, creed, religion, ancestry, gender, sex, sexual orientation, gender identity, gender expression, pregnancy, marital status, genetic information, age, veteran status, or physical or mental disability. University of Kentucky, Kentucky State University, U.S. Department of Agriculture, and Kentucky Counties, Cooperative.



State Communications Contest Results



Jeremiah Jury

- State Champion 14-15 year old Mock Interview
- State Champion Senior Natural Resources Demonstration



Charleigh Wright

- State Champion Senior SET Demonstration
- Blue Ribbon 14 year old Speech



Ryan Preston

- State Runner-Up Junior Animal Science Demonstration



Alex Brock

- State Champion Senior Digital Media Presentation

4-H CAMP HIGHLIGHTS



2023-2024 4-H CLUBS



Starting club for ages 5-8
Meets once a month to explore all possibilities 4-H offers



Open Enrollment September



Cooking Club

Meets twice a month to master measuring techniques, reading recipes, gathering appropriate cooking accessories, etc.

Craft Club

Meets once a month to create various types of crafts that can be exhibited in the fair.



DISCOVER 4-H

Meets once a month to discover all aspects of 4-H

Teen Council

Teens meet once a month to build leadership and communication skills



Country

Meets a few times throughout the year to cure a green ham
4-H ers give a speech at State Fair, get two hams-one to sell and one to keep

Camp

Summer camp for youth to discover everything 4-H has to offer.

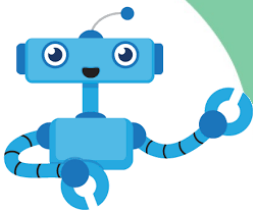


Horse Club

Meets once a month to learn how to care for the horses. Discuss and observe the different ways to ride.

Livestock

Meets once a month to learn the basics of caring for livestock which can led to farm tours and field trips to explore why livestock production is important.



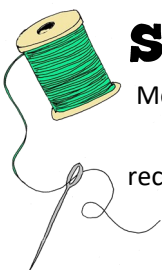
Robotics

Meets once a month to program, build, and gain knowledge of the functions of EV3 Lego robotics

4-H Outdoor Adventure

Meets once a month for outdoor adventures such as fishing, hiking, camping.

18 USC 707



Sewing

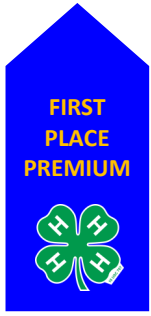
Meets during January and February to learn the basics of sewing, reading a pattern, recognizing tools, and makes various projects that can be exhibited in the fair.

Shooting Sports

Meets twice a month during summer to learn the safety, mechanics to operate properly, and promotes leadership



4-H Fair Exhibits





Martin-Gatton

College of Agriculture,
Food and Environment

University of Kentucky

Cooperative Extension Service

Owen County

265 Ellis Hwy

Owenton, KY 40359-9300

Phone: (502) 484-5703

Fax: (502) 484-5704

owen.ca.uky.edu

Email: DL_CES_OWEN@EMAIL.UKY.EDU

David Gabbard

County Agent for 4H Youth Development

Peach Crisp

½ cup quick cook oats
½ cup honey-sweetened granola
3 tablespoons whole wheat flour
½ cup packed light brown sugar
¼ cup butter, softened

6 cups peaches, peeled and sliced
1 teaspoon ground cinnamon
¼ teaspoon ground nutmeg
¼ teaspoon ground allspice
¼ cup chopped pecans

Preheat oven to 375 degrees F.
Combine the oats, granola, flour and brown sugar in a medium mixing bowl. **Cut** small pieces of softened butter over the top. **Cut** butter into dry ingredients until well combined and crumbly. Lightly **coat** an 8-by-8-inch baking dish with cooking spray, **add** peaches. **Sprinkle** the dry ingredients and butter mixture over the peaches. **Add** spices and chopped nuts evenly

over the top. **Place** on rack in the middle position in oven. **Bake** 25 to 30 minutes, or until topping is golden brown.

Yield: 9 servings

Nutritional Analysis: 200 calories, 8 g fat, 3.5 g saturated fat, 15 mg cholesterol, 5 mg sodium, 32 g carbohydrate, 2 g fiber, 20 g sugars, 3 g protein.

